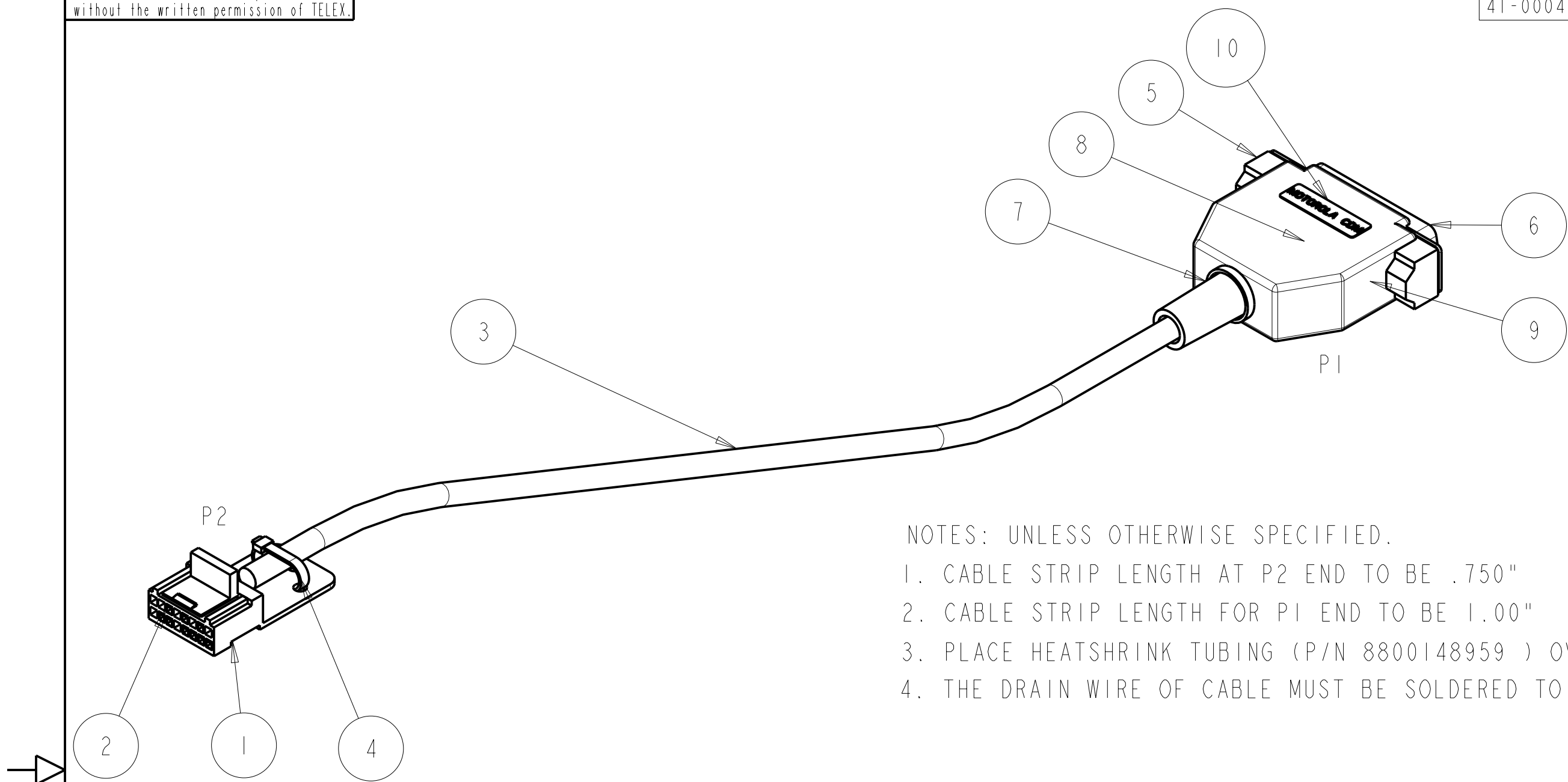


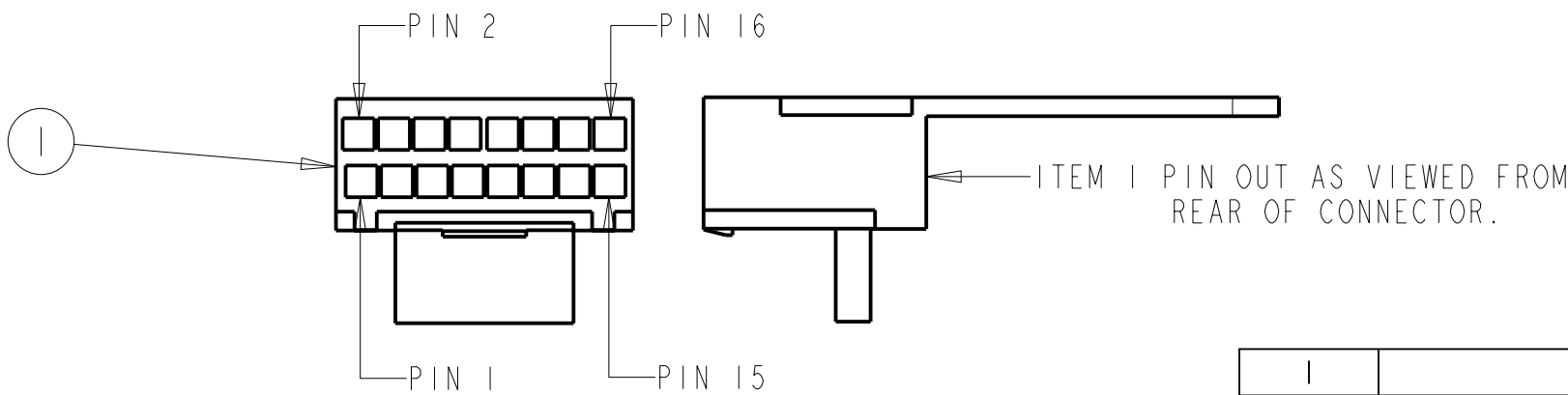
This drawing is a description of a product or specification represents a proprietary product of TELEX, Lincoln, NE., and shall not be released, disclosed nor duplicated without the written permission of TELEX.

REVISIONS				
CHG NO	LTR	DESCRIPTION	DATE	APPD
41-000305	A	RELEASE TO PRODUCTION	8/15/05	PBH
41-000336	B	CHANGE PI-25 TO P2-2. WAS PI-25 TO P2-5. ADD LABELS.	02/08/06	PBH
41-000466	C	P/N 2511039500 QTY WAS 1.500	2/02/07	KH



NOTES: UNLESS OTHERWISE SPECIFIED.

1. CABLE STRIP LENGTH AT P2 END TO BE .750"
2. CABLE STRIP LENGTH FOR P1 END TO BE 1.00"
3. PLACE HEATSHRINK TUBING (P/N 8800148959) OVER DRAIN WIRE BEFORE SOLDERING TO CONNECTOR SHELL.
4. THE DRAIN WIRE OF CABLE MUST BE SOLDERED TO THE CONNECTOR SHELL (PI).



WIRING DETAIL

PIN	TO	PIN	COLOR
PI-7	-	P2-7	BLACK
PI-8	-	P2-6	YELLOW
PI-9	-	P2-12	PURPLE
PI-14	-	P2-3	GREEN
PI-20	-	P2-4	RED
PI-21	-	P2-8	BLUE
PI-22	-	P2-14	ORANGE
PI-24	-	P2-11	WHITE
PI-25	-	P2-2	BROWN

1	LABEL, MOTOROLA CDM	10	804142-8	
1	LABEL, TELEX	9	803629	
0.083	HEAT SHRINK TUBING	8	8800148959	
1	STRAIN RELIEF	7	63351004	
1	CONNECTOR, 25 PIN D-SUB	6	8800101954	
1	HOUSING, 25 PIN D-SUB CONNECTOR	5	650369	
1	TIE WRAP	4	51709000	
3.000	CABLE 9 COND 24GA ALPHA PN 1219 BELDON #9539	3	2511039500	
9	MOTOROLA CDM1250 MOBILE RADIO ACCESSORY CONTACT PIN	2	539244000	
1	CDM1250 MOBILE RADIO ACCESSORY CONNECTOR SHELL	1	591736000	
QTY	DESCRIPTION	ITEM	PART NUMBER	ADDITIONAL INFORMATION

QTY	DESCRIPTION	8/15/05	ITEM	PART NUMBER	SPECIFICATION
	UNSPECIFIED LIMITS OF TOLERANCE	DATE	JJS		<div>Telex®</div> <div>TELEX COMMUNICATIONS INC.</div> <div>Lincoln Nebraska U.S.A.</div> <div>CABLE ASSEMBLY,</div> <div>TITLE IP-223/MOTOROLA</div> <div>CDM1250 MOBILE INTERFACE</div>
	DECIMAL: FRACTION:	DR BY	SKL		
	.X = ±.030 IN	CHK BY	PBH		
	.XX = ±.010 IN	APPR'D	KH		
	.XXX = ±.005 IN	PROD			
	ANGLES ± 1°, BENDS ±2°	SEE BOM TABLE			SIZE
	STRAIGHTNESS AND/OR				CODE IDENT
	FLATNESS .005 IN./1 IN.				DWG NO.
	CONCENTRICITY				1 OF 1
	UNMARKED ANGLES, BENDS				SCALE: NONE
	AND INTERSECTIONS 90°				SHEET:
	THREADS - EXT. CLASS 2A				
	INT. CLASS 2B				
NEXT ASSY	USED ON				
APPLICATIONS					